



Model: Moto Guzzi V85 TT Euro 5

Subject: Intake valve – Technical update

Campaign Code: PG2ZZQ2103_KIT_PGA

Dear Dealer / Service Center,

As part of the ongoing, stringent quality control activities of the components installed on our vehicles, the continuous search for new and better technical solutions and attention to customers, we hereby announce that an intervention relating to the replacement of the intake valves, on a specific lot of vehicles of the model in question, must be carried out.

If, on the other hand, the valve stem is damaged, the entire head will need to be replaced.

Please determine which vehicles in your stock or sold by you require this update, and:

- Update all vehicles in stock before sale.
- update vehicles that have already been sold at the first available opportunity.

This issue will be managed as usual via a dedicated section of the PWM warranty management software system.

The list of frame numbers involved in this update is viewable in the Campaigns / Campaign Reports section of the PWM system.

You are kindly requested to identify the vehicles in your stock that require the aforementioned update, and implement it BEFORE they are sold to the end customer, or, if the vehicles are already in circulation, at the first available opportunity.



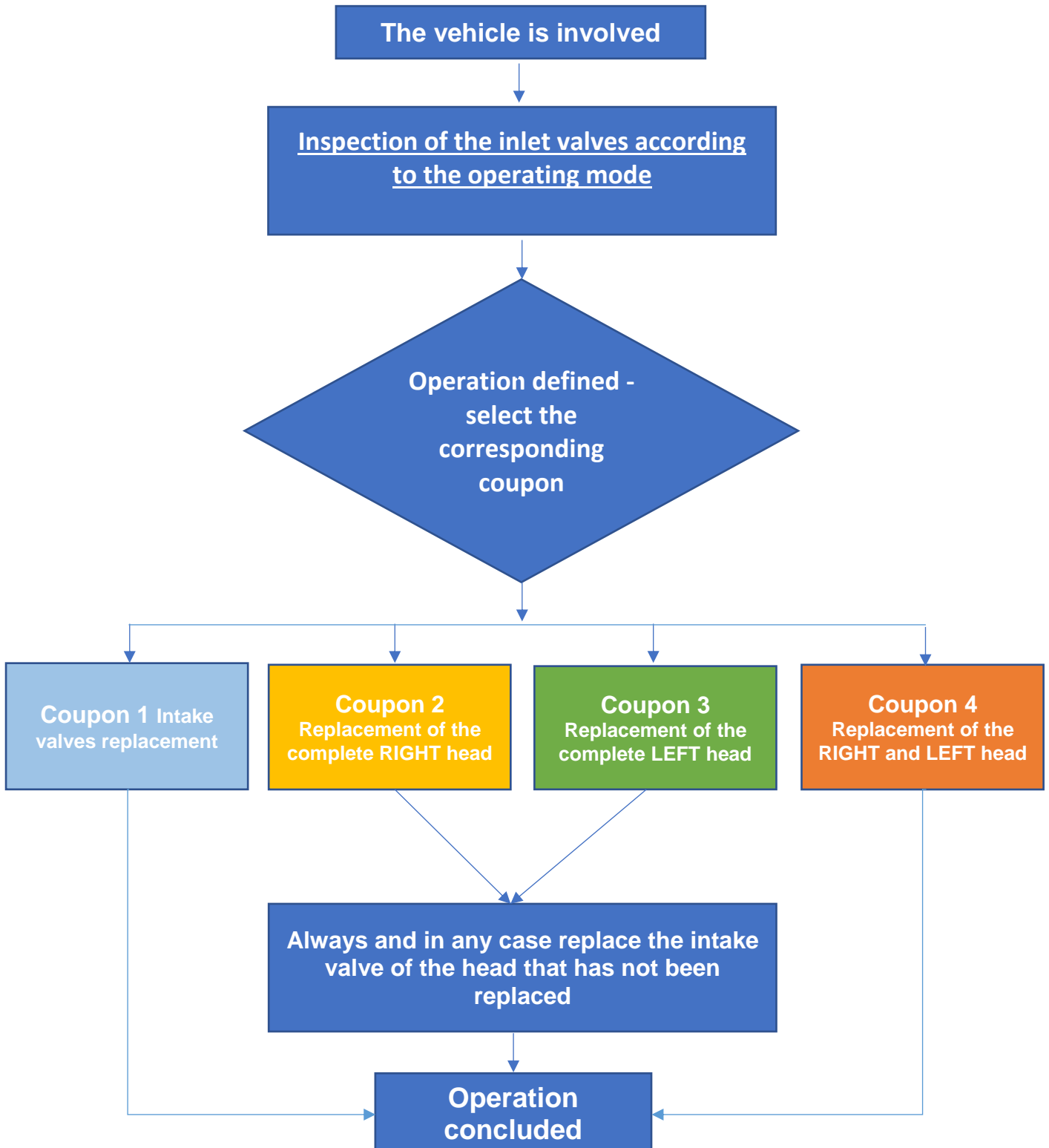
PROCEDURE FOR MANAGING CAMPAIGN:

- From the main menu, select the option “**campaigns**”, then select the option “**Enter campaigns**” from the sub-menu.
- Enter the frame number subject to the recall campaign in the window opened.
- Select “**search**” to open a window with the available coupon:
 - **Coupon 1 Intake valves replacement:** service coupon which foresees the replacement of the intake valve and the reimbursement of the labor employed
 - **Coupon 2 Replacement of the complete RIGHT head:** service coupon which foresees the replacement of the complete head and the reimbursement of the labor employed
 - **Coupon 3 Replacement of the complete LEFT head:** service coupon which foresees the replacement of the complete head and the reimbursement of the labor employed
 - **Coupon 4 Replacement of the complete RIGHT and LEFT head:** service coupon which foresees the replacement of the complete heads and the reimbursement of the labor employed

IMPORTANT

- **By selecting Service Coupon 2 or Service Coupon 3, the intake valve of the head that has not been replaced must also be replaced.**
- Select the coupon, compile the “**Km**” field, and then save the procedure. Please note that to complete the operation and receive a refund, the coupon must be declared "completed" (from the PWM status management) within 6 months from the day of entry.

Below is an operational diagram for the management of the operations



LABOUR AND SPARE PARTS:

- **Coupon 1 Intake valves replacement:**
 - Minutes of labour envisaged for procedure: **325'**
 - Spare part code: **See table 1**
- **Coupon 2 Replacement of the complete RIGHT head:**
 - Minutes of labour envisaged for procedure: **265'**
 - Spare part code: See table 2
- **Coupon 3 Replacement of the complete LEFT head:**
 - Minutes of labour envisaged for procedure: **265'**
 - Spare part code: **See table 3**
- **Coupon 4 Replacement of the RIGHT and LEFT head**
 - Minutes of labour envisaged for procedure: **225'**
 - Spare part code: **See table 4**

The head gaskets needed to complete the update will not be included with the parts that you receive as indicated in **red** in the tables below; Please proceed ordering the correct gasket needed for that engine as a warranty claim.

SPARE PARTS NO.

TABLE 1

DESCRIPTION	P/N	QTY
Convex head screw with torx impression	1A015041	4
Exhaust gasket	852090	2
Intake manifold gasket	1A009167	2
head cover gasket	2A000565	2
Damper drift	1A006716	6
Stud bolt sealing ring	1A006861	2
O-Ring 2,62x9.19 oil passage	2A000579	4
Cylinder/head gasket Th. 0.6 mm	1A004660	2
Cylinder/head gasket Th. 0.8 mm (alternative)	1A004661	2
Cylinder/head gasket Th. 1 mm (alternative)	1A004662	2
Valve sealing ring	1A003452	2
Intake valve	1A015607R	2



MOTO GUZZI®

DESCRIPTION	P/N	QTY
Convex head screw with torx impression	1A015041	4
Exhaust gasket	852090	2
Intake manifold gasket	1A009167	2
head cover gasket	2A000565	2
Damper drift	1A006716	6
Stud bolt sealing ring	1A006861	2
O-Ring 2,62x9.19 oil passage	2A000579	4
Cylinder/head gasket Th. 0.6 mm	1A004660	2
Cylinder/head gasket Th. 0.8 mm (alternative)	1A004661	2
Cylinder/head gasket Th. 1 mm (alternative)	1A004662	2
Right head	1A0151195	1
Intake valve	1A015607R	1
Valve sealing ring	1A003452	1

TABLE 3

DESCRIPTION	P/N	QTY
Convex head screw with torx impression	1A015041	4
Exhaust gasket	852090	2
Intake manifold gasket	1A009167	2
head cover gasket	2A000565	2
Damper drift	1A006716	6
Stud bolt sealing ring	1A006861	2
O-Ring 2,62x9.19 oil passage	2A000579	4
Cylinder/head gasket Th. 0.6 mm	1A004660	2
Cylinder/head gasket Th. 0.8 mm (alternative)	1A004661	2
Cylinder/head gasket Th. 1 mm (alternative)	1A004662	2
Left head	1A0177255	1
Intake valve	1A015607R	1
Valve sealing ring	1A003452	1

TABLE 4

DESCRIPTION	P/N	QTY
Convex head screw with torx impression	1A015041	4
Exhaust gasket	852090	2
Intake manifold gasket	1A009167	2
head cover gasket	2A000565	2
Damper drift	1A006716	6
Stud bolt sealing ring	1A006861	2
O-Ring 2,62x9.19 oil passage	2A000579	4
Cylinder/head gasket Th. 0.6 mm	1A004660	2
Cylinder/head gasket Th. 0.8 mm (alternative)	1A004661	2
Cylinder/head gasket Th. 1 mm (alternative)	1A004662	2
Left head	1A0177255	1
Right head	1A0151195	1

PROCEDURE FOR MANAGING CAMPAIGN PER HEAD

- Disassemble the head, release the intake valve and remove it from the head.
- Check for any signs of incipient seizure and adhesion by moving the valve without load inside the respective valve guide (see photos below).
- Only in the event that there are possible signs on the stem and/or traces of incipient seizure, replace the entire head in question.
- If, on the other hand, none of the above aspects have occurred, replace the intake valve only, without replacing the head.

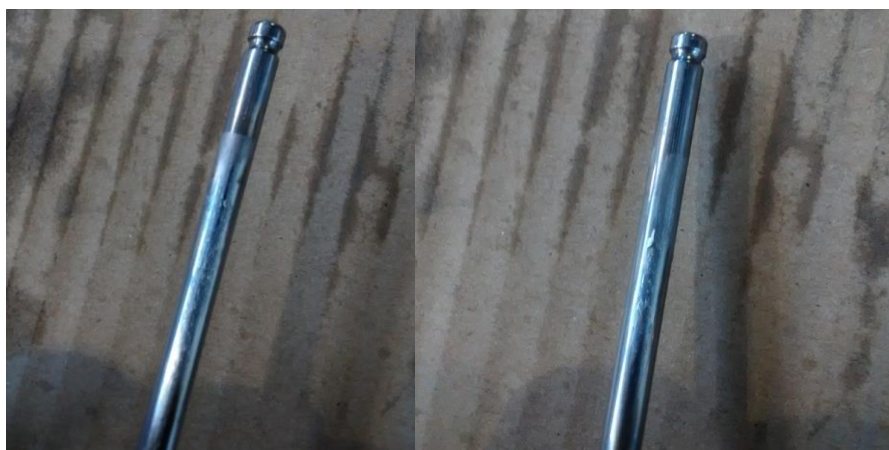
Note: In the event that other components of the engine, which is part of the lot in question, are damaged, contact your Technical Representative to define the actions.

For any other information or general operating details, as well as for the tightening torques of the individual spare parts, refer to the workshop manual:

Moto Guzzi Engine V85 E4-E5 (2019-).

PHOTOS RELATIVE TO THE VALVE SEIZURE

By way of example, some photos are shown below in order to unequivocally identify possible incipient seizure of the valve stem in its seat, first and second photos, while in the third photo the adhesion, without load, of the valve stem in its seat is appreciable.





Please contact your Technical Support Representative for any questions or assistance.

Best regards,

Piaggio & C. SpA

Business Unit Aftersales

Operations & Technical Service